



# Nordic Heritage

AW 2026



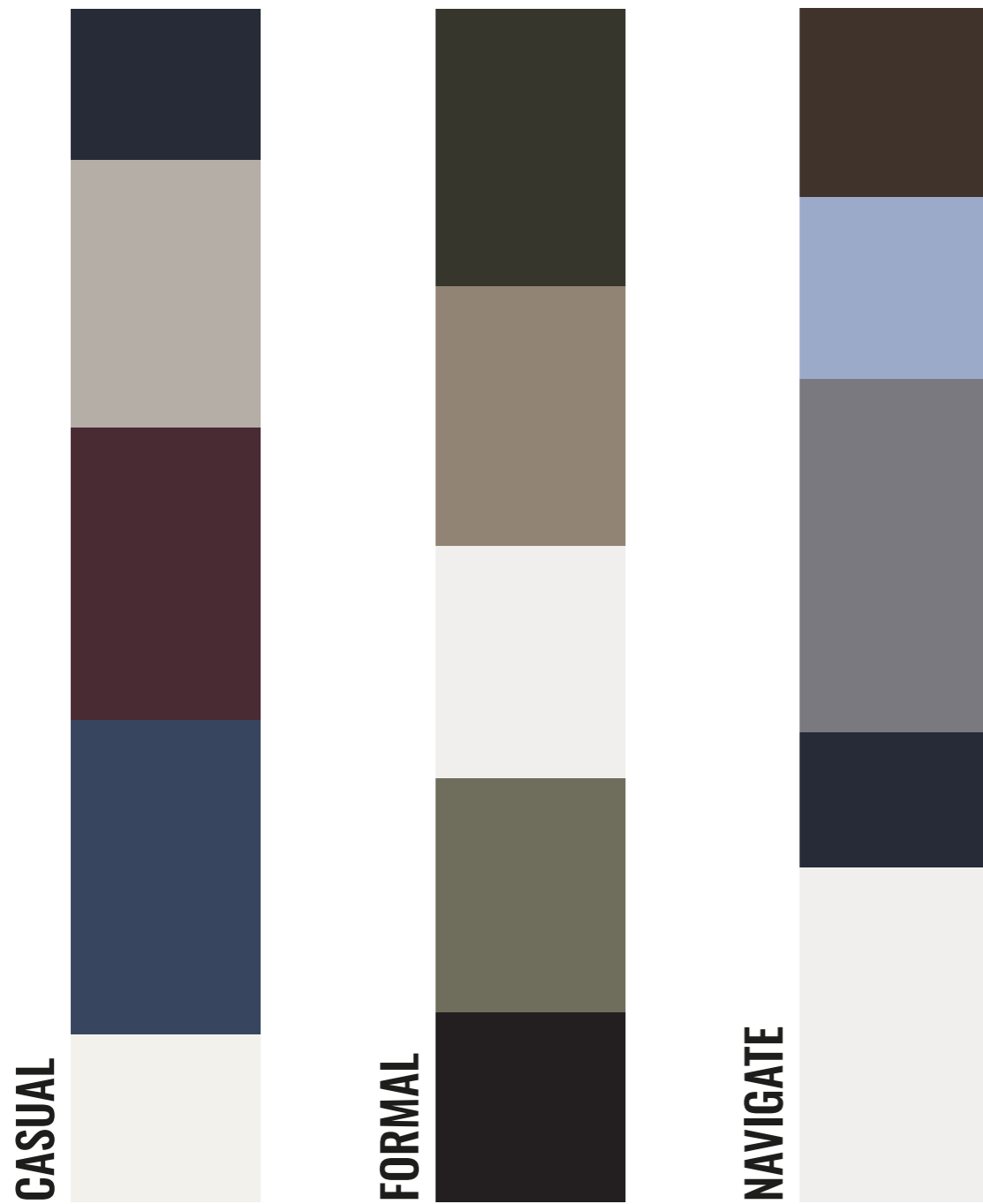
PRE END



*Table of*  
**CONTENTS**

BLAZERS.....	7
OVERSHIRTS.....	17
OUTERWEAR.....	25
SHIRTS.....	47
KNITS.....	73
SWEATS.....	105
POLOS.....	119
TEE'S.....	125
JEANS / PANTS.....	131
SOCKS.....	147
NOOS.....	151
ASSORTMENTS.....	189

# *Collection* **COLOURS**



ALL PRE-ENDEAVOR PRODUCTS ARE DESIGNED AND DEVELOPED IN DENMARK. WE HAVE AN IN-HOUSE TEAM OF SKILLED DESIGNERS AND PATTERN DESIGNERS WHO CONSTANTLY FOCUS ON THE BRAND'S DNA, QUALITY, FUNCTIONALITY, AND NEW DEVELOPMENT. WE HAVE A TOTAL CONCEPT AND TAKE PRIDE IN PRODUCING ALL TYPES OF CLOTHING FOR THE COMMON MAN WHO APPRECIATES A TIMELESS DESIGN.

WE LOVE WHAT WE DO, AND ALWAYS STRIVE TO BE THE BEST IN OUR FIELD. WE WANT TO BE INSPIRING AND THEREFORE PUSH THE LIMITS TO REVOLUTIONIZE OUR INDIVIDUAL STYLES, AND CONSTANTLY WORK TO IMPROVE OUR SKILLS. ALL OUR COLLECTIONS HAVE BEEN DEVELOPED WITH A FOCUS ON ACHIEVING THE PERFECT FIT WITH APPROPRIATE SIZES AND BEST POSSIBLE COMFORT. WE DO NOT COMPROMISE ON THE QUALITY OF OUR DESIGNS AND DETAILS.



*Pre Cnd*  
**BLAZERS**



19-4020 DARK SAPPHIRE



19-0509 ROSIN



19-0712 DEMITASSE

## PEJOSEF BLAZER

6000289 // BLACK LABEL // REGULAR FIT

STRETCH BLAZER / UNCONSTRUCTED

### DATA

<b>COMPOSITION</b>	95% POLYESTER 5% ELASTANE
<b>DEIVERY</b>	AUG - OCT
<b>ASSORTMENT</b>	FREE
<b>SEASON</b>	AW26



19-4118 DARK DENIM



19-0712 DEMITASSE

## PEJAKOB BLAZER

6000290 // BLACK LABEL // REGULAR FIT

CASUAL FIT BLAZER / KNIT UNCONSTRUCTED

### DATA

COMPOSITION	100% POLYESTER
DELEVERY	AUG - OCT
ASSORTMENT	FREE
SEASON	AW26



19-0509 ROSIN



18-4017 NIGHT OWL



19-0712 DEMITASSE

## PEPALMER BLAZER

6000291 // BLACK LABEL // REGULAR FIT

TWILL BLAZER WITH WOOL CONTENT

### DATA

<b>COMPOSITION</b>	50% WOOL 50% POLYESTER
<b>DEIVERY</b>	AUG - OCT
<b>ASSORTMENT</b>	FREE
<b>SEASON</b>	AW26



19-4020 DARK SAPPHIRE



18-4017 NIGHT OWL

## PECOLLINS BLAZER

6000292 // BLACK LABEL // REGULAR FIT

CHECK BLAZER WITH WOOL CONTENT

### DATA

<b>COMPOSITION</b>	65% POLYESTER 25% VISCOSE 10% WOOL
<b>DEIVERY</b>	AUG - OCT
<b>ASSORTMENT</b>	FREE
<b>SEASON</b>	AW26



*Pre Cnd*  
**OVERSHIRTS**



19-4020 DARK SAPPHIRE



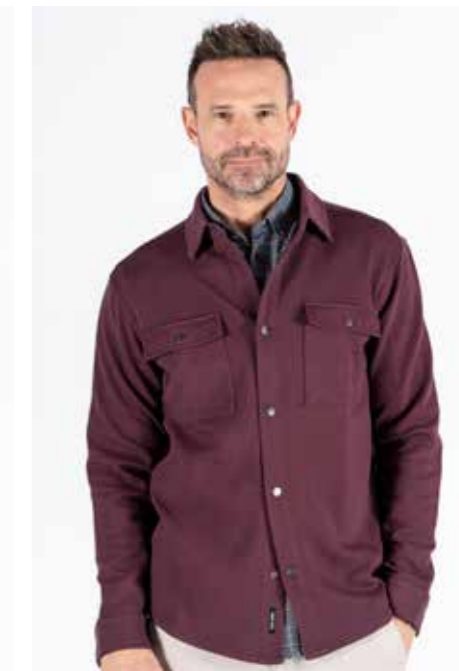
16-1109 GREIGE



19-0509 ROSIN



19-0712 DEMITASSE



19-2118 WINETASTING

## PEJESTER OVERSHIRT

6000195 // BLACK LABEL // REGULAR FIT

JERSEY OVERSHIRT

AVAILABLE IN PLUS SIZE

### DATA

COMPOSITION	60% COTTON 40% POLYESTER
DELEVERY	AUG - OCT
ASSORTMENT	TOPS
SEASON	AW26



19-4020 DARK SAPPHIRE



15-0000 DOVE



19-0712 DEMITASSE



19-0509 ROSIN



19-2118 WINETASTING

## PEPARKER OVERSHIRT

6000196 // BLACK LABEL // REGULAR FIT

CORDUROY OVERSHIRT

### DATA

COMPOSITION	100% COTTON
DELEVERY	AUG - OCT
ASSORTMENT	TOPS
SEASON	AW26



99-0509 ROSIN MELANGE



99-4020 DARK SAPPHIRE MELANGE



96-1109 GREIGE MELANGE

## PESHANE OVERSHIRT

6000252 // BLACK LABEL // REGULAR FIT

WOOLEN LOOK OVERSHIRT

### DATA

<b>COMPOSITION</b>	83% POLYESTER 17% VISCOSE
<b>DELEVERY</b>	AUG - OCT
<b>ASSORTMENT</b>	TOPS
<b>SEASON</b>	AW26



*Pre Cnd*  
**OUTERWEAR**



19-0509 ROSIN



15-0000 DOVE



19-4020 DARK SAPPHIRE



9070 JET BLACK

## PETIMBER JACKET

6000394 // BLACK LABEL // REGULAR FIT

PUFFER JACKET

AVAILABLE IN PLUS SIZE

### DATA

COMPOSITION	100% NYLON
DELEVERY	AUG - OCT
ASSORTMENT	TOPS
SEASON	AW26



19-0509 ROSIN



15-0000 DOVE



19-4020 DARK SAPPHIRE



9070 JET BLACK

## PETIMBER VEST

6000395 // BLACK LABEL // REGULAR FIT

PUFFER VEST

### DATA

COMPOSITION	100% NYLON
DELEVERY	AUG - OCT
ASSORTMENT	TOPS
SEASON	AW26



19-4020 DARK SAPPHIRE



19-0712 DEMITASSE



19-0509 ROSIN

## PE HARALD JACKET

6000036 // BLACK LABEL // REGULAR FIT

LIGHT PADDED QUILT JACKET

### DATA

<b>COMPOSITION</b>	100% POLYESTER
<b>DELEVERY</b>	AUG - OCT
<b>ASSORTMENT</b>	TOPS
<b>SEASON</b>	AW26



19-4020 DARK SAPPHIRE



19-0712 DEMITASSE



19-0509 ROSIN

## PE HARALD VEST

6000037 // BLACK LABEL // REGULAR FIT

LIGHT PADDED QUILT VEST

### DATA

<b>COMPOSITION</b>	100% POLYESTER
<b>DELEVERY</b>	AUG - OCT
<b>ASSORTMENT</b>	TOPS
<b>SEASON</b>	AW26



19-4020 DARK SAPPHIRE



16-1109 GREIGE



19-0509 ROSIN

## PEFRODO JACKET

6000190 // BLACK LABEL // REGULAR FIT

WIND JACKET WITH WADDING

AVAILABLE IN PLUS SIZE

### DATA

COMPOSITION	100% POLYESTER
DELEVERY	AUG - OCT
ASSORTMENT	TOPS
SEASON	AW26



19-4020 DARK SAPPHIRE



19-0509 ROSIN



15-0000 DOVE



9070 JET BLACK

## PERUSSEL JACKET

6000191 // BLACK LABEL // REGULAR FIT

WINDJACKET WITH PADDING

AVAILABLE IN PLUS SIZE

### DATA

COMPOSITION	100% POLYESTER
DEIVERY	AUG - OCT
ASSORTMENT	TOPS
SEASON	AW26



15-0000 DOVE



19-4020 DARK SAPPHIRE



19-0509 ROSIN



9070 JET BLACK

## PERAGNAR JACKET

6000185 // BLACK LABEL // REGULAR FIT

LONG PUFFER JACKET

AVAILABLE IN PLUS SIZE

### DATA

COMPOSITION	100% POLYESTER
DEIVERY	AUG - OCT
ASSORTMENT	TOPS
SEASON	AW26



19-0712 DEMITASSE



19-4020 DARK SAPPHIRE

## PEASTON COAT

6000193 // BLACK LABEL // REGULAR FIT

WOOL CONTENT COAT

### DATA

COMPOSITION	60% WOOL 40% POLYESTER
DELEVERY	AUG - OCT
ASSORTMENT	FREE
SEASON	AW26



19-0712 DEMITASSE



19-4020 DARK SAPPHIRE

## PEANDREW COAT

6000192 // BLACK LABEL // REGULAR FIT

WOOL CONTENT

---

### DATA

<b>COMPOSITION</b>	60% WOOL 40% POLYESTER
<b>DELEVERY</b>	AUG - OCT
<b>ASSORTMENT</b>	FREE
<b>SEASON</b>	AW26



99-0509 ROSIN MELANGE



99-4020 DARK SAPPHIRE MELANGE



96-1109 GREIGE MELANGE



99-2118 WINETASTING MELANGE

## PETRUMAN COAT

6000194 // BLACK LABEL // REGULAR FIT

MELANGE WOOL LOOK COAT

### DATA

<b>COMPOSITION</b>	83% POLYESTER 17% VISCOSE
<b>DEIVERY</b>	AUG - OCT
<b>ASSORTMENT</b>	FREE
<b>SEASON</b>	AW26



*Pre Cnd*  
**SHIRTS**



19-4020 DARK SAPPHIRE



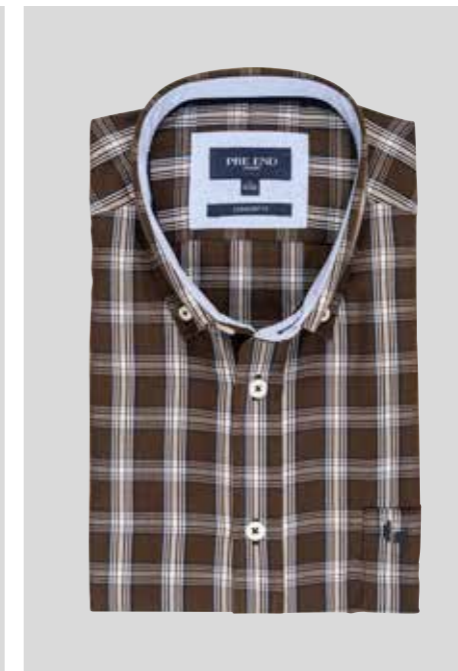
19-0712 DEMITASSE



19-0509 ROSIN



19-4118 DARK DENIM



16-3922 BRUNNERA BLUE



18-0312 DEEP LICHEN GREEN

## PEROME SHIRT LS

6000226 // NAVY LABEL // COMFORT FIT

CHECK PATTERN. TC QUALITY

AVAILABLE IN PLUS SIZE

### DATA

COMPOSITION	65% POLYESTER 35% COTTON
DEIVERY	AUG - OCT
ASSORTMENT	TOPS
SEASON	AW26



19-4020 DARK SAPPHIRE



19-0712 DEMITASSE



19-0509 ROSIN

## PEROME STRIPE SHIRT LS

6000227 // NAVY LABEL // COMFORT FIT

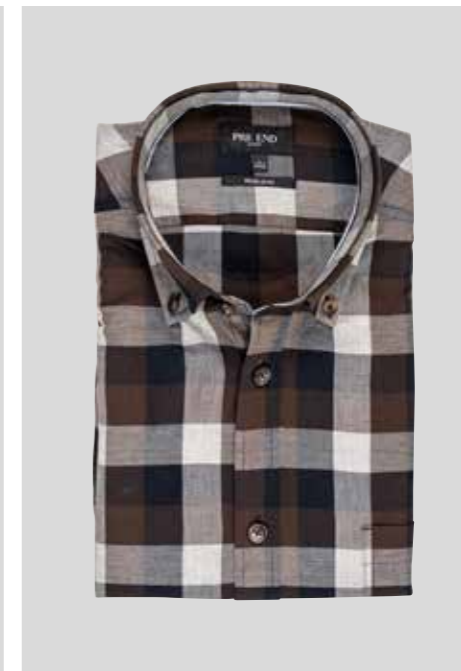
STRIPE PATTERN. TC QUALITY

### DATA

<b>COMPOSITION</b>	65% POLYESTER 35% COTTON
<b>DELEVERY</b>	AUG - OCT
<b>ASSORTMENT</b>	TOPS
<b>SEASON</b>	AW26



19-4118 DARK DENIM



19-4020 DARK SAPPHIRE



15-0000 DOVE



19-0509 ROSIN

## PERAMON SHIRT LS

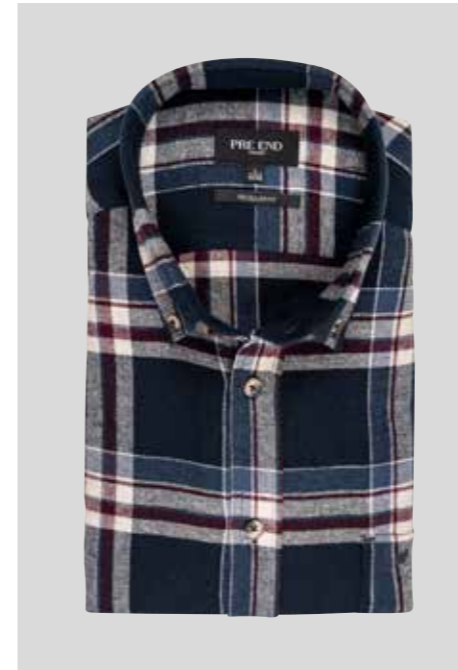
6000234 // BLACK LABEL // REGULAR FIT

CHECK FLANNEL SHIRT

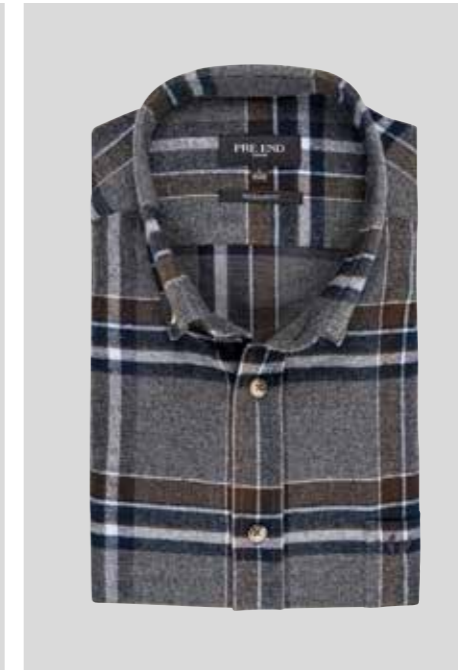
AVAILABLE IN PLUS SIZE

### DATA

COMPOSITION	100% COTTON
DELEVERY	AUG - OCT
ASSORTMENT	TOPS
SEASON	AW26



19-4020 DARK SAPPHIRE



18-4017 NIGHT OWL



19-0509 ROSIN



19-0712 DEMITASSE



19-2118 WINETASTING



18-0312 DEEP LICHEN GREEN

## PEFARMER SHIRT LS

6000233 // BLACK LABEL // REGULAR FIT

COTTON FLANNEL SHIRT

AVAILABLE IN PLUS SIZE

### DATA

<b>COMPOSITION</b>	100% COTTON
<b>DELEVERY</b>	AUG - OCT
<b>ASSORTMENT</b>	TOPS
<b>SEASON</b>	AW26



99-4020 DARK SAPPHIRE MELANGE



95-0000 DOVE MELANGE



9502 DARK GREY MELANGE



96-3922 BRUNNERA BLUE MELANGE



99-0509 ROSIN MELANGE



99-2118 WINETASTING MELANGE

## PEBARNY SHIRT LS

6000232 // BLACK LABEL // REGULAR FIT

FLANNEL TWILL SHIRT

AVAILABLE IN PLUS SIZE

### DATA

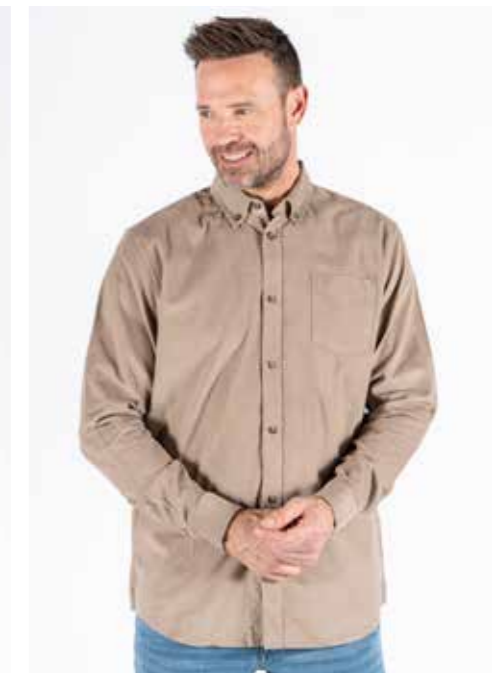
<b>COMPOSITION</b>	100% COTTON
<b>DELEVERY</b>	AUG - OCT
<b>ASSORTMENT</b>	TOPS
<b>SEASON</b>	AW26



19-4020 DARK SAPPHIRE



19-2118 WINETASTING



16-1109 GREIGE



19-0509 ROSIN



15-0000 DOVE



19-0712 DEMITASSE

## PESTORM SHIRT LS

6000231 // BLACK LABEL // REGULAR FIT

CORDUROY SHIRT

AVAILABLE IN PLUS SIZE

### DATA

COMPOSITION	100% COTTON
DELEVERY	AUG - OCT
ASSORTMENT	TOPS
SEASON	AW26



19-0712 DEMITASSE



19-4020 DARK SAPPHIRE



19-0509 ROSIN

## PERASCAL SHIRT LS

6000235 // BLACK LABEL // REGULAR FIT

CHECK FLANNEL SHIRT

### DATA

<b>COMPOSITION</b>	100% COTTON
<b>DELEVERY</b>	AUG - OCT
<b>ASSORTMENT</b>	TOPS
<b>SEASON</b>	AW26



19-4020 DARK SAPPHIRE



19-4118 DARK DENIM

## PE DENNI SHIRT LS

6000244 // BLACK LABEL // REGULAR FIT

DENIM SHIRT

---

### DATA

<b>COMPOSITION</b>	100% COTTON
<b>DELEVERY</b>	AUG - OCT
<b>ASSORTMENT</b>	TOPS
<b>SEASON</b>	AW26



non-iron



4 way stretch



quick drying



regular fit



cutaway collar



16-3922 BRUNNERA BLUE



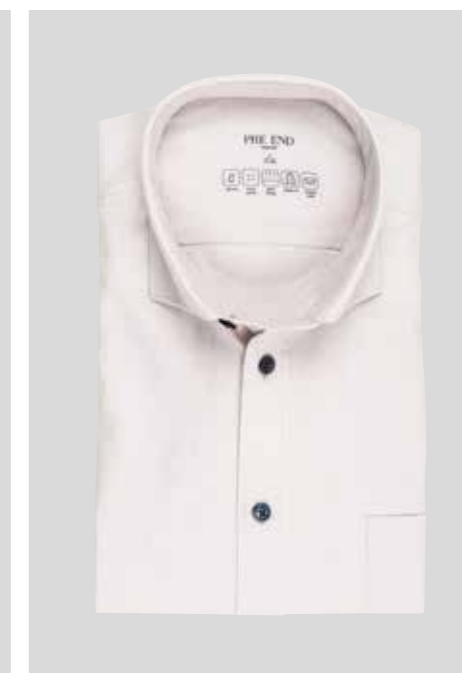
19-4020 DARK SAPPHIRE



1050 OPTICAL WHITE



9070 JET BLACK



15-0000 DOVE

## PEFELLINI SHIRT LS

6000251 // BLACK LABEL // REGULAR FIT

DOBBY STRETCH SHIRT LS

### DATA

<b>COMPOSITION</b>	64% COTTON 27% POLYESTER E% ELASTANE
<b>DEIVERY</b>	AUG - OCT
<b>ASSORTMENT</b>	TOPS
<b>SEASON</b>	AW26



16-3922 BRUNNERA BLUE



19-4020 DARK SAPPHIRE



16-1109 GREIGE



19-2118 WINETASTING

## PEPRINCE SHIRT LS

6000230 // BLACK LABEL // REGULAR FIT

POPLIN STRETCH SHIRT LS

### DATA

<b>COMPOSITION</b>	97% COTTON 3% ELASTANE
<b>DEIVERY</b>	AUG - OCT
<b>ASSORTMENT</b>	TOPS
<b>SEASON</b>	AW26



16-3922 BRUNNERA BLUE



19-4020 DARK SAPPHIRE



16-1109 GREIGE



19-2118 WINETASTING

## PEPORTER SHIRT LS

600029 // BLACK LABEL // REGULAR FIT

POPLIN STRETCH SHIRT LS

### DATA

<b>COMPOSITION</b>	97% COTTON 3% ELASTANE
<b>DEIVERY</b>	AUG - OCT
<b>ASSORTMENT</b>	TOPS
<b>SEASON</b>	AW26



16-3922 BRUNNERA BLUE



19-4020 DARK SAPPHIRE



1050 OPTICAL WHITE



19-0509 ROSIN

## PE OSCAR SHIRT LS

6000254 // BLACK LABEL // REGULAR FIT

AOP STRETCH SHIRT LS

### DATA

<b>COMPOSITION</b>	97% COTTON 3% ELASTANE
<b>DEIVERY</b>	AUG - OCT
<b>ASSORTMENT</b>	TOPS
<b>SEASON</b>	AW26



*Pre Cnd*  
**KNITS**



15-0000 DOVE



19-0509 ROSIN



19-4020 DARK SAPPHIRE



19-0712 DEMITASSE

## PESCOTT KNIT POLO

6000238 // BLACK LABEL // REGULAR FIT

POLO KNIT

### DATA

<b>COMPOSITION</b>	40% POLYESTER 30% NYLON 30% ACRYLIC
<b>DEIVERY</b>	AUG - OCT
<b>ASSORTMENT</b>	TOPS
<b>SEASON</b>	AW26



19-0509 ROSIN



19-4020 DARK SAPPHIRE



19-0712 DEMITASSE



16-1109 GREIGE

## PETOBBY KNIT C

6000239 // BLACK LABEL // REGULAR FIT

KNIT CARDIGAN WITH POLO COLLAR

### DATA

<b>COMPOSITION</b>	80% ACRYLIC 20% WOOL
<b>DEIVERY</b>	AUG - OCT
<b>ASSORTMENT</b>	TOPS
<b>SEASON</b>	AW26



19-0509 ROSIN



19-4020 DARK SAPPHIRE



19-2118 WINETASTING



15-0000 DOVE

## PERUDY KNIT 0

6000240 // BLACK LABEL // REGULAR FIT

2-TONE RIB KNIT

### DATA

<b>COMPOSITION</b>	80% VISCOSE 20% NYLON
<b>DELEVERY</b>	AUG - OCT
<b>ASSORTMENT</b>	TOPS
<b>SEASON</b>	AW26



19-4020 DARK SAPPHIRE



19-2118 WINETASTING



15-0000 DOVE



19-0509 ROSIN



11-3900 WISPY CLOUDS

## PETRISTAN KNIT Z

6000242 // BLACK LABEL // REGULAR FIT

CABLE KNIT HALF ZIP

### DATA

COMPOSITION	50% COTTON 50% ACRYLIC
DEIVERY	AUG - OCT
ASSORTMENT	TOPS
SEASON	AW26



19-2118 WINETASTING



15-0000 DOVE



19-0509 ROSIN



16-1109 GREIGE



19-4020 DARK SAPPHIRE



19-0712 DEMITASSE

## PEMURPHY KNIT 0

6000236 // BLACK LABEL // REGULAR FIT

COTTON/ACRYLIC STRUCTURE KNIT

### DATA

<b>COMPOSITION</b>	70% COTTON 30% ACRYLIC
<b>DELEVERY</b>	AUG - OCT
<b>ASSORTMENT</b>	TOPS
<b>SEASON</b>	AW26



19-2118 WINETASTING



15-0000 DOVE



19-0509 ROSIN



19-4020 DARK SAPPHIRE

## PEMURPHY KNIT C

6000237 // BLACK LABEL // REGULAR FIT

COTTON/ACRYLIC STRUCTURE KNIT

### DATA

<b>COMPOSITION</b>	70% COTTON 30% ACRYLIC
<b>DELEVERY</b>	AUG - OCT
<b>ASSORTMENT</b>	TOPS
<b>SEASON</b>	AW26



19-4020 DARK SAPPHIRE



16-1109 GREIGE



16-3922 BRUNNERA BLUE



19-0509 ROSIN



9070 JET BLACK



19-2118 WINETASTING

## PE SYDNEY KNIT POLO LS

6000095 // BLACK LABEL // REGULAR FIT

SUPERSOFT VISCOSE POLO KNIT

### DATA

<b>COMPOSITION</b>	80% VISCOSE 20% NYLON
<b>DELEVERY</b>	AUG - OCT
<b>ASSORTMENT</b>	TOPS
<b>SEASON</b>	AW26



19-4020 DARK SAPPHIRE



16-1109 GREIGE



16-3922 BRUNNERA BLUE



19-0509 ROSIN



9070 JET BLACK



19-2118 WINETASTING

## PESYDNEY KNIT R

6000285 // BLACK LABEL // REGULAR FIT

SUPERSOFT VISCOSE ROLL KNIT

### DATA

<b>COMPOSITION</b>	80% VISCOSE 20% NYLON
<b>DELEVERY</b>	AUG - OCT
<b>ASSORTMENT</b>	TOPS
<b>SEASON</b>	AW26



19-4020 DARK SAPPHIRE



16-1109 GREIGE



16-3922 BRUNNERA BLUE



19-0509 ROSIN



9070 JET BLACK



19-2118 WINETASTING

## PE SYDNEY Z

6000286 // BLACK LABEL // REGULAR FIT

SUPERSOFT VISCOSE HALF ZIP KNIT

### DATA

<b>COMPOSITION</b>	80% VISCOSE 20% NYLON
<b>DEIVERY</b>	AUG - OCT
<b>ASSORTMENT</b>	TOPS
<b>SEASON</b>	AW26



9500 GREY MELANGE



9070 JET BLACK



19-4020 DARK SAPPHIRE



99-0509 ROSIN MELANGE



99-2118 WINETASTING MELANGE



96-1109 GREIGE MELANGE



99-0712 DEMITASSE MELANGE



99-4118 DARK DENIM MELANGE



96-3922 BRUNNERA MELANGE

## PEGORDON KNIT 0

6000180 // BLACK LABEL // REGULAR FIT

MERINO KNIT

### DATA

<b>COMPOSITION</b>	50% WOOL 50% ACRYLIC
<b>DEIVERY</b>	AUG - OCT
<b>ASSORTMENT</b>	TOPS
<b>SEASON</b>	AW26



9500 GREY MELANGE



19-4020 DARK SAPPHIRE



9070 JET BLACK



99-0509 ROSIN MELANGE



99-2118 WINETASTING MELANGE



96-1109 GREIGE MELANGE

## PEGORDON KNIT R

6000181 // BLACK LABEL // REGULAR FIT

MERINO KNIT

### DATA

<b>COMPOSITION</b>	50% WOOL 50% ACRYLIC
<b>DELEVERY</b>	AUG - OCT
<b>ASSORTMENT</b>	TOPS
<b>SEASON</b>	AW26



9500 GREY MELANGE



19-4008 METEORITE



99-4020 DARK SAPPHIRE MELANGE



95-0000 DOVE MELANGE



96-1109 GREIGE MELANGE



99-4118 DARK DENIM MELANGE



99-2118 WINETASTING MELANGE



99-0712 DEMITASSE MELANGE



99-0509 ROSIN MELANGE



96-3922 BRUNNERA MELANGE

## PEMALCOM KNIT V

6000114 // NAVY LABEL // COMFORT FIT

COTTON MELANGE KNIT

## PEMALCOM KNIT O

6000177 // NAVY LABEL // COMFORT FIT

12 GG MELANGE KNIT

### DATA

COMPOSITION	100% COTTON
DELEVERY	AUG - OCT
ASSORTMENT	TOPS
SEASON	AW26



9500 GREY MELANGE



19-4008 METEORITE



99-4020 DARK SAPPHIRE MELANGE



95-0000 DOVE MELANGE



96-1109 GREIGE MELANGE



99-4118 DARK DENIM MELANGE



99-2118 WINETASTING MELANGE



99-0712 DEMITASSE MELANGE



99-0509 ROSIN MELANGE



96-3922 BRUNNERA MELANGE

## PEMALCOM KNIT Z

6000115 // NAVY LABEL // COMFORT FIT

COTTON MELANGE KNIT

### DATA

<b>COMPOSITION</b>	100% COTTON
<b>DEIVERY</b>	AUG - OCT
<b>ASSORTMENT</b>	TOPS
<b>SEASON</b>	AW26



9500 GREY MELANGE



19-4008 METEORITE



99-4020 DARK SAPPHIRE MELANGE



99-0509 ROSIN MELANGE



96-1109 GREIGE MELANGE



99-4118 DARK DENIM MELANGE



99-2118 WINETASTING MELANGE

## PEMALCOM KNIT C

6000116 // NAVY LABEL // COMFORT FIT

COTTON MELANGE KNIT

### DATA

<b>COMPOSITION</b>	100% COTTON
<b>DELEVERY</b>	AUG - OCT
<b>ASSORTMENT</b>	TOPS
<b>SEASON</b>	AW26



99-4020 DARK SAPPHIRE MELANGE



96-1109 GREIGE MELANGE

## PE SAMMY WINDBREAKER

6000243 // BLACK LABEL // REGULAR FIT

KNIT WINDBREAKER WITH PILE LINING

### DATA

COMPOSITION	100% ACRYLIC
DELEVERY	AUG - OCT
ASSORTMENT	TOPS
SEASON	AW26



*Pre Cnd*  
**SWEATS**



19-4020 DARK SAPPHIRE



19-2118 WINETASTING



19-0509 ROSIN



16-1109 GREIGE



19-0712 DEMITASSE



19-4118 DARK DENIM

## PECARLTON SWEAT 0

6000287 // BLACK LABEL // REGULAR FIT

2 FABRIC SWEAT

### DATA

<b>COMPOSITION</b>	60% POLYESTER 40% COTTON
<b>DELEVERY</b>	AUG - OCT
<b>ASSORTMENT</b>	TOPS
<b>SEASON</b>	AW26



19-4020 DARK SAPPHIRE



19-2118 WINETASTING



19-0509 ROSIN



16-1109 GREIGE



19-0712 DEMITASSE



19-4118 DARK DENIM

## PECARLTON SWEAT C

6000288 // BLACK LABEL // REGULAR FIT

2 FABRIC SWEAT

### DATA

<b>COMPOSITION</b>	60% POLYESTER 40% COTTON
<b>DELEVERY</b>	AUG - OCT
<b>ASSORTMENT</b>	TOPS
<b>SEASON</b>	AW26



19-4020 DARK SAPPHIRE



19-2118 WINETASTING



19-0509 ROSIN



16-1109 GREIGE



19-0712 DEMITASSE

## PETONY SWEAT Z

6000281 // BLACK LABEL // REGULAR FIT

SWEAT IN POPCORN INTERLOCK

AVAILABLE IN PLUS SIZE

### DATA

<b>COMPOSITION</b>	70% COTTON 30% POLYESTER
<b>DEIVERY</b>	AUG - OCT
<b>ASSORTMENT</b>	TOPS
<b>SEASON</b>	AW26



19-4020 DARK SAPPHIRE



19-2118 WINETASTING



19-0509 ROSIN



16-1109 GREIGE



19-0712 DEMITASSE

## PETONY SWEAT C

6000282 // BLACK LABEL // REGULAR FIT

SWEAT IN POPCORN INTERLOCK

AVAILABLE IN PLUS SIZE

### DATA

<b>COMPOSITION</b>	70% COTTON 30% POLYESTER
<b>DEIVERY</b>	AUG - OCT
<b>ASSORTMENT</b>	TOPS
<b>SEASON</b>	AW26



19-4008 METEORITE



19-4020 DARK SAPPHIRE



19-0414 FOREST NIGHT

## PEJASPER PILE FLEECE C

6000368 // BLACK LABEL // REGULAR FIT

PILE FLEECE SWEAT CARDIGAN

AVAILABLE IN PLUS SIZE

### DATA

<b>COMPOSITION</b>	100% POLYESTER
<b>DELEVERY</b>	AUG - OCT
<b>ASSORTMENT</b>	TOPS
<b>SEASON</b>	AW26



19-4020 DARK SAPPHIRE



19-0712 DEMITASSE



19-0509 ROSIN



18-4017 NIGHT OWL

## PEDILLON SWEAT C

6000381 // BLACK LABEL // REGULAR FIT

SWEAT CARDIGAN WITH BUTTON CLOSURE

### DATA

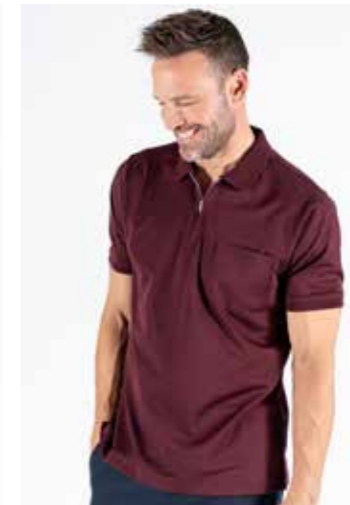
<b>COMPOSITION</b>	55% COTTON 45% POLYESTER
<b>DEIVERY</b>	AUG - OCT
<b>ASSORTMENT</b>	TOPS
<b>SEASON</b>	AW26



*Pre Cnd*  
**POLOS**



19-4020 DARK SAPPHIRE



19-2118 WINETASTING



19-0712 DEMITASSE



16-1109 GREIGE



19-0509 ROSIN



15-0000 DOVE



9070 JET BLACK

## PE SAILOR POLO SS

6000267 // BLACK LABEL // REGULAR FIT

SS POLO WITH ZIP

AVAILABLE IN PLUS SIZE

### DATA

<b>COMPOSITION</b>	50% COTTON 50% POLYESTER
<b>DELEVERY</b>	AUG - OCT
<b>ASSORTMENT</b>	TOPS
<b>SEASON</b>	AW26



19-4020 DARK SAPPHIRE



19-0712 DEMITASSE



19-2118 WINETASTING



16-1109 GREIGE



19-0509 ROSIN



16-3922 BRUNNERA BLUE

## PEORIGON POLO LS

6000265 // BLACK LABEL // REGULAR FIT

2 TONE POLO PIQUE

AVAILABLE IN PLUS SIZE

### DATA

<b>COMPOSITION</b>	62% COTTON 38% POLYESTER
<b>DELEVERY</b>	AUG - OCT
<b>ASSORTMENT</b>	TOPS
<b>SEASON</b>	AW26



*Pre Cnd*  
**TEE'S**



19-4020 DARK SAPPHIRE



19-2118 WINETASTING



19-0712 DEMITASSE



16-1109 GREIGE



19-0509 ROSIN



16-3922 BRUNNERA BLUE



1050 OPTICAL WHITE



9070 JET BLACK



15-0000 DOVE



18-0312 DEEP LICHEN GREEN



19-4118 DARK DENIM



18-4017 NIGHT OWL

## PEJOHNSON TEE SS

6000266 // BLACK LABEL // REGULAR FIT

BASIC TEE WITH STRETCH

### DATA

<b>COMPOSITION</b>	95% COTTON 5% ELASTANE
<b>DELEVERY</b>	AUG - OCT
<b>ASSORTMENT</b>	TOPS
<b>SEASON</b>	AW26



19-4020 DARK SAPPHIRE



19-2118 WINETASTING



19-0712 DEMITASSE



19-0509 ROSIN



16-3922 BRUNNERA BLUE



9070 JET BLACK



15-0000 DOVE

## PECADEN TEE SS

6000277 // BLACK LABEL // REGULAR FIT

TEE WITH CHEST PRINT

AVAILABLE IN PLUS SIZE

### DATA

COMPOSITION	100% COTTON
DELEVERY	AUG - OCT
ASSORTMENT	TOPS
SEASON	AW26



*Pre Cond*  
**JEANS / PANTS**



2016 SOFT BLUE WASH



2182 DARK DRY BLUE



2185 USED GREY MIST

## PEJEDI JEANS

6000379, 6000387, 6000389 // BLACK LABEL // REGULAR FIT

KNITTED SOFT JOGG JEANS

### DATA

<b>COMPOSITION</b>	82% COTTON, 17% POLYESTER, 1% ELASTANE
<b>DEIVERY</b>	AUG - OCT
<b>ASSORTMENT</b>	FREE
<b>SEASON</b>	AW26



19-4020 DARK SAPPHIRE



19-4008 METEORITE



15-0000 DOVE



19-0414 FOREST NIGHT



17-1310 TIMBER WOLF

## PEPEBECKER 5-POCKET PANTS

6000130 // BLACK LABEL // REGULAR FIT

TWILL 5-POCKET PANTS

## PEBECKER CHINO PANTS

6000365 // BLACK LABEL // REGULAR FIT

TWILL CHINO PANTS

### DATA

<b>COMPOSITION</b>	98% COTTON 2% ELASTANE
<b>DEIVERY</b>	AUG - OCT
<b>ASSORTMENT</b>	FREE
<b>SEASON</b>	AW26



19-4020 DARK SAPPHIRE



16-1109 GREIGE



19-0509 ROSIN



15-0000 DOVE



19-0712 DEMITASSE

## PETHOMAS PANTS

6000263 // BLACK LABEL // REGULAR FIT

PIQUE PANTS

### DATA

COMPOSITION	100% COTTON
DELEVERY	AUG - OCT
ASSORTMENT	FREE
SEASON	AW26



2248 BLUE DENIM



2249 BLACK DENIM

## PEBARDA PANTS

6000354 // BLACK LABEL // REGULAR FIT

PANTS WITH ELASTIC WAISTBAND

---

### DATA

<b>COMPOSITION</b>	74% COTTON 24% POLYESTER 2% ELASTANE
<b>DEIVERY</b>	AUG - OCT
<b>ASSORTMENT</b>	FREE
<b>SEASON</b>	AW26



2248 BLUE DENIM



2249 BLACK DENIM

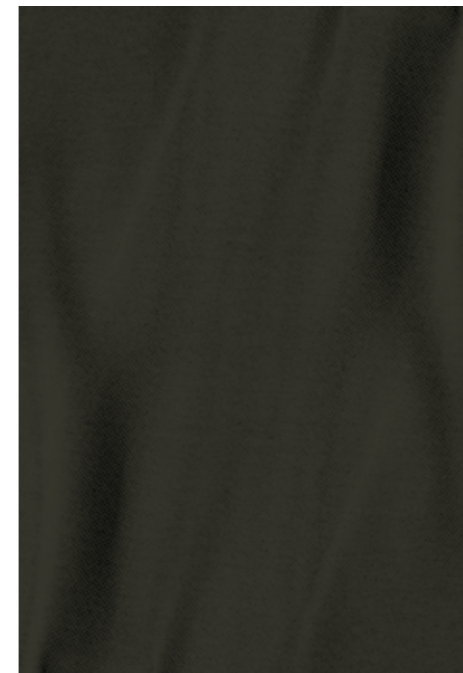
## PEBYRON CHINOS

6000355 // BLACK LABEL // REGULAR FIT

---

### DATA

<b>COMPOSITION</b>	74% COTTON 24% POLYESTER 2% ELASTANE
<b>DEIVERY</b>	AUG - OCT
<b>ASSORTMENT</b>	FREE
<b>SEASON</b>	AW26



19-0509 ROSIN



9070 JET BLACK



16-1109 GREIGE



19-4020 DARK SAPPHIRE



18-4017 NIGHT OWL

## PESHEDON PANTS

6000264 // BLACK LABEL // REGULAR FIT

CLASSIC PANTS WITH STRUCTURE FABRIC

### DATA

<b>COMPOSITION</b>	97% COTTON 3% ELASTANE
<b>DEIVERY</b>	AUG - OCT
<b>ASSORTMENT</b>	FREE
<b>SEASON</b>	AW26





*Pre Cnd*  
**SOCKS**



PERICK-001 SOCK  
19-4020 DARK SAPPHIRE



PERICK-001 SOCK  
9070 JET BLACK



PERICK-002 SOCK  
19-4020 DARK SAPPHIRE



PERICK-002 SOCK  
9070 JET BLACK



PERICK-003 SOCK  
19-4020 DARK SAPPHIRE



PERICK-003 SOCK  
9070 JET BLACK



PERICK-004 SOCK  
19-4020 DARK SAPPHIRE



PERICK-004 SOCK  
9070 JET BLACK



PERICK-005 SOCK  
19-4020 DARK SAPPHIRE



PERICK-005 SOCK  
9070 JET BLACK

## PERICK SOCKS

1040164, 1040165, 1040166, 1040167, 1040168 // BLACK LABEL // REGULAR FIT

COLOURED SOCKS

### DATA

<b>COMPOSITION</b>	68% COTTON 24% POLYESTER 6% NYLON 2% ELASTANE
<b>DELEVERY ASSORTMENT</b>	AUG - OCT SOCKS
<b>SEASON</b>	AW26



*Pre Cnd*  
**NOOS**



7087 ULTRA DARK NAVY



9070 JET BLACK

## PEHACKETT BLAZER

6000166 // BLACK LABEL // REGULAR FIT

HALF LINING

NOOS STYLE

### DATA

COMPOSITION	94% POLYESTER 6% ELASTANE
DEIVERY	AUG - OCT
ASSORTMENT	FREE
SEASON	NOOS



7042 DARK BLUE



7087 ULTRA DARK NAVY



5045 FOREST GREEN



9500 GREY MELANGE



9098 BLACK

## PEDAMON BLAZER

6000167 // BLACK LABEL // REGULAR FIT

BI-STRETCH, WATER REPELLENT

NOOS STYLE

### DATA

COMPOSITION	62% POLYESTER, 32% VISCOSE, 6% ELASTANE
DEIVERY	AUG - OCT
ASSORTMENT	FREE
SEASON	NOOS



7042 DARK BLUE



7087 ULTRA DARK NAVY



5045 FOREST GREEN



9500 GREY MELANGE



9098 BLACK

## PEDAMON WAISTCOAT

6000168 // BLACK LABEL // REGULAR FIT

BI-STRETCH, WATER REPELLENT

NOOS STYLE

### DATA

COMPOSITION	62% POLYESTER, 32% VISCOSE, 6% ELASTANE
DELEVERY	AUG - OCT
ASSORTMENT	FREE
SEASON	NOOS



7042 DARK BLUE



7087 ULTRA DARK NAVY



5045 FOREST GREEN



9500 GREY MELANGE



9098 BLACK

## PEDAMON PANTS

6000169 // BLACK LABEL // REGULAR FIT

BI-STRETCH, WATER REPELLENT

NOOS STYLE

### DATA

<b>COMPOSITION</b>	62% POLYESTER, 32% VISCOSE, 6% ELASTANE
<b>DELEVERY</b>	AUG - OCT
<b>ASSORTMENT</b>	FREE
<b>SEASON</b>	NOOS



7050 DARK NAVY



7032 BLUE



5106 OLD GREEN



1001 WHITE



9097 SOLID BLACK

## PELUCAS SHIRT LS

6000057 // BLACK LABEL // REGULAR FIT

IRONFREE COTTON

NOOS STYLE

### DATA

COMPOSITION	100% COTTON
DELEVERY	AUG - OCT
ASSORTMENT	FREE
SEASON	NOOS



1001 WHITE



7017 CLASSIC BLUE



5106 OLD GREEN

## PEEGMONT SHIRT LS

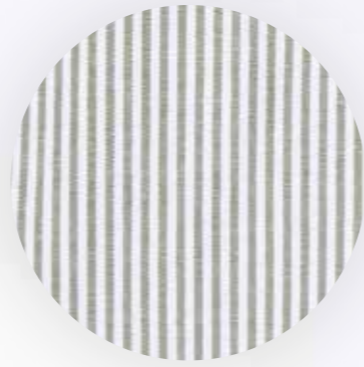
6000059 // BLACK LABEL // REGULAR FIT

COTTON SATIN WEAVE

NOOS STYLE

### DATA

COMPOSITION	100% COTTON
DELEVERY	AUG - OCT
ASSORTMENT	FREE
SEASON	NOOS



7050 DARK NAVY



7017 CLASSIC BLUE



5065 GREEN LEAF

## PEEGIL SHIRT LS

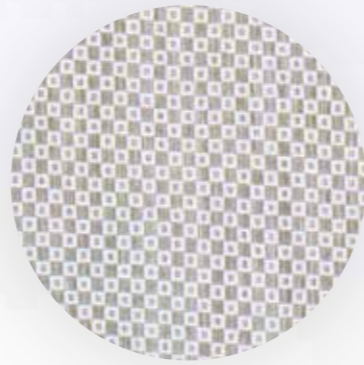
6000060 // BLACK LABEL // REGULAR FIT

STRIPED COTTON POPLIN

NOOS STYLE

### DATA

COMPOSITION	100% COTTON
DEIVERY	AUG - OCT
ASSORTMENT	FREE
SEASON	NOOS



7050 DARK NAVY



7017 CLASSIC BLUE



5065 GREEN LEAF

## PEGORM SHIRT LS

6000061 // BLACK LABEL // REGULAR FIT

DOBBY PATTERN

NOOS STYLE

### DATA

<b>COMPOSITION</b>	100% COTTON
<b>DEIVERY</b>	AUG - OCT
<b>ASSORTMENT</b>	FREE
<b>SEASON</b>	NOOS



2016 SOFT BLUE WASH



2024 DARK BLUE WASH



2020 BLACK WASH



2070 VINTAGE USED WASH



2189 RAW BLUE

## PEROBBIE JEANS

6000133, 6000135, 6000134, 6000136, 1030291 // JEANS LABEL // REGULAR FIT

WITH STRETCH

NOOS STYLE

### DATA

<b>COMPOSITION</b>	98% COTTON, 2% ELASTANE
<b>DEIVERY</b>	AUG - OCT
<b>ASSORTMENT</b>	FREE
<b>SEASON</b>	NOOS



2130 DRY DARK BLUE

## PEROBBIE JEANS

6000139 // JEANS LABEL // REGULAR FIT

WITH STRETCH

NOOS STYLE

### DATA

<b>COMPOSITION</b>	99% COTTON, 1% ELASTANE
<b>DEIVERY</b>	AUG - OCT
<b>ASSORTMENT</b>	FREE
<b>SEASON</b>	NOOS



2024 DARK BLUE WASH



2020 BLACK WASH

## PE DENVER JEANS

6000141, 6000140 // JEANS LABEL // COMFORT FIT

NOOS STYLE

### DATA

<b>COMPOSITION</b>	98% COTTON, 2% ELASTANE
<b>DEIVERY</b>	AUG - OCT
<b>ASSORTMENT</b>	FREE
<b>SEASON</b>	NOOS



6080 GOLDEN SAND



5045 FOREST GREEN



7087 ULTRA DARK NAVY



9098 BLACK

## PEELWOOD CARGO PANTS

1033964 // BLACK LABEL // REGULAR FIT

WITH STRETCH

NOOS STYLE

### DATA

<b>COMPOSITION</b>	73% COTTON, 19% TENSEL, 6% POLYESTER, 2% ELASTANE
<b>DELEVERY</b>	AUG - OCT
<b>ASSORTMENT</b>	FREE
<b>SEASON</b>	NOOS



7050 DARK NAVY



5069 LIGHT ARMY



9501 LIGHT GREY MIX



9070 JET BLACK

## PERORY PANTS

6000165 // BLACK LABEL // REGULAR FIT

SWEAT PANTS

NOOS STYLE

### DATA

COMPOSITION	80% COTTON, 20% POLYESTER
DELEVERY	AUG - OCT
ASSORTMENT	FREE
SEASON	NOOS



7050 DARK NAVY



9502 DARK GREY MIX



9098 BLACK

## PE SOCKS

6000170 // BLACK LABEL

NOOS STYLE

### DATA

<b>COMPOSITION</b>	83% COTTON, 14% POLYESTER, 3% ELASTANE
<b>DELEVERY</b>	AUG - OCT
<b>ASSORTMENT</b>	SOCKS
<b>SEASON</b>	NOOS



9098 BLACK

## PE10-PACK SOCKS

6000171 // BLACK LABEL

NOOS STYLE

### DATA

<b>COMPOSITION</b>	83% COTTON, 14% POLYESTER, 3% ELASTANE
<b>DELEVERY</b>	AUG - OCT
<b>ASSORTMENT</b>	FREE
<b>SEASON</b>	NOOS



7050 DARK NAVY



9500 GREY MIX



9098 BLACK

**PEBAMBOO SOCKS 5PK**  
1040169

NOOS STYLE

DATA

<b>COMPOSITION</b>	75% BAMBOO 20% VISCOSE 5% ELASTANE
<b>DELEVERY</b>	AUG - OCT
<b>ASSORTMENT</b>	FREE
<b>SEASON</b>	NOOS



7050 DK.NAVY



9098 BLACK

## PEBAMBOO TIGHTS 5PK

1040171

NOOS STYLE

### DATA

<b>COMPOSITION</b>	65% BAMBOO 30% COTTON 5% ELASTANE
<b>DELEVERY</b>	AUG - OCT
<b>ASSORTMENT</b>	FREE
<b>SEASON</b>	NOOS



9098 BLACK



1001 WHITE

## PEBAMBOO TEE 2PK

1040098

NOOS STYLE

### DATA

<b>COMPOSITION</b>	65% BAMBOO 30% COTTON 5% ELASTANE
<b>DELEVERY</b>	AUG - OCT
<b>ASSORTMENT</b>	FREE
<b>SEASON</b>	NOOS



*Pre-Ord*  
**ASSORTMENTS**



# TOPS

POLO, KNIT, SWEAT, JACKET, SHIRTS, T-SHIRTS & CARDIGAN

## TA -

SIZES	S/37/38	M/39/40	L/41/42	XL/43/44	2XL/45/46	3XL/47/48	TOTAL
PCS		2	5	5	3	1	16

## TC -

SIZES	S/37/38	M/39/40	L/41/42	XL/43/44	2XL/45/46	3XL/47/48	TOTAL
PCS		1	3	3	2	1	10

## TE -

SIZES	S/37/38	M/39/40	L/41/42	XL/43/44	2XL/45/46	3XL/47/48	TOTAL
PCS		2	3	2	1		8

## TH -

SIZES	S/37/38	M/39/40	L/41/42	XL/43/44	2XL/45/46	3XL/47/48	TOTAL
PCS	1	2	3	3	2	1	12

## TO -

SIZES	S/37/38	M/39/40	L/41/42	XL/43/44	2XL/45/46	3XL/47/48	TOTAL
PCS		1	2	4	3	2	12

# SOCKS

## ASSORTMENTS

SIZES	ONE SIZE	TOTAL
BOX	50	50

# ALL OTHERS

PANTS, JEANS, BLAZER, NOOS & PLUS SIZE

## FREE SIZING

*Find your sales*  
**CONTACT**

## HQ Denmark

### PRE-END

#### Jakob Petersen

Mobile +45 2943 0729  
E-mail preend@marcus.dk

## Jylland

#### Lars-Peder Sander

Phone +45 4084 2477  
E-mail larspeder@canson.dk  
louise@canson.dk

## Sjælland, Fyn & Iceland

#### Lars Nielsen

Phone +45 40519454  
E-mail lnagentur@icloud.com

## Sweden

#### Stefan Tornvall

Phone +46 708289205  
E-mail stefan@uniquebrandsgbg.se

#### Andreas Elmlad

Phone +46 706591490  
E-mail andreas@uniquebrandsgbg.se

#### Christofer Karlsson

Phone +46702576596  
E-mail info@cabkagency.se

## Norway

#### Rune Johansen

Mobile: +47 913 48 386  
Email: rune.johansen@skjelland.no

## Finland

#### Kaiwear Ky

#### Kai Vikkula

Mobile +358 408 296 234  
E-mail kai.vikkula@gmail.com

## Ireland

#### Liv Clothing Ltd.

Paul Butler  
Mobile +353 (0) 876468890  
E-mail paul@livclothingagencies.com

## Greece & Cyprus

#### George Theodorou & Co.

Phone: +30 2107646392  
Mobile: +30 6944581631  
E-mail: george@lerton.gr

#### I.M.C.

Phone: +30 2310 535832  
+30 2310 537982  
E-mail: info@imc.net.gr

## Netherlands

#### TB Fashion Agency

Tom Barends  
Mobile +31 6 18192598  
E-mail info@tombarends.nl

## Spain

#### Michael Wagner sl.

Phone: 932657967  
Mobile: 609293538  
E-mail: m.wagner@m-wagner.com

## Germany

#### Rainer Fladda New Globe Trading

Phone: +49 7152 352144  
Mobile: +49 (0) 171 241 4663  
e-mail: r.fladda@t-online.de

## Schleswig-Holstein, Hamburg, Niedersachsen

#### Handelsagentur Ingo Warns

Phone: +49 (0) 441-8661  
Mobile: +49 (0) 171 991 5557  
e-mail: IngoWarns@aol.com

## Hessen, Saarland, Rhld.-Pfalz

#### Ralph Ludwig Handelsagentur

Phone: +49(0) 6122 705958  
Mobile: +49 (0) 170 297 2140  
e-mail: ra-ludwig@outlook.com

## Baden-Württemberg

#### Markus Mayer Modeagentur

Mobile: +49(0) 171 373 5867  
e-mail: mayermodeteam@aol.com

## Bayern

#### Peter Hofmann Handelsvertretung

Mobile: + 49(0) 175 18 66 617  
e-mail: peter-hofmann60@gmx.de

## Slovenia

#### Miha Mlakar

Phone: +386 5 393 59 00  
Mobile: +386 41 390 760  
E-mail: miha@enoteks.si

MORE INFO PREEND.DK

FOLLOW US

